



Professional Color Model 1347



Cuddeback's Professional Series cameras are specially designed and manufactured for professional users. Features required by biologists, outfitters and the like who use cameras year round in the most hostile environments.

**High Performance.** ¼ second trigger speed with fast recovery mode. High performance 5MP CMOS image sensor with 20MP mode. Powerful flash that is optimized for image quality and range.

**Easy to use.** We know that in many cases an employee will be using these cameras. Cuddeback's Super Simple Interface is quick to master and prevents most user errors.

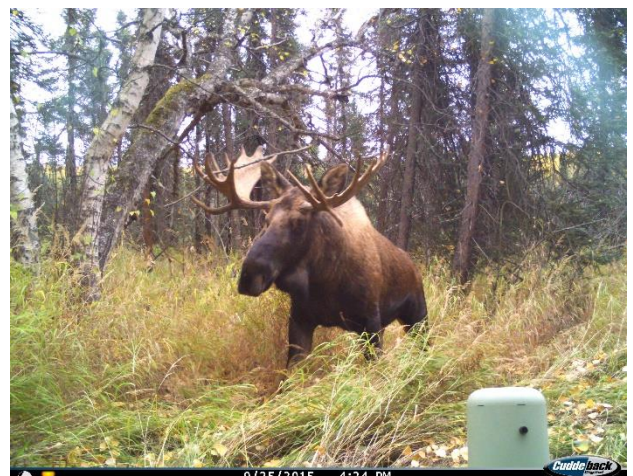
**Rugged Built.** These camera are built in a new compact housing that is fully water proof. Latches and doors are improved for long term reliability and repair. All electronics (PCBs) are conformal coated to resist humidity and water.

**Special Features.** Camera ID range of 0001 to 9999. Burst Mode 1 to 5 images. Select day and/or night operation.

Our consumer cameras are manufactured based upon the demands of the consumer market, these professional cameras can remain in production much longer. We will continue to manufacture and support these models as long as components are available.

Also available in 850nm LED IR model.

20 MP Images  
¼ sec Trigger Speed  
Super Simple Setup





Professional Color Model 1347

**20MP Images**  
**¼ second trigger speed**  
**Color strobe to 100 foot range**  
**Conformal Coated Electronics**

Feature	Setting	Advantage
Conformal Coated Electronics	Yes	Waterproof coating on all electronics provides enhanced protection from humidity and water.
Flash Technology	Color Strobe	Color strobe with 1 inch flash tube.
Flash Power	Indoors, Close, Medium, Far	Flash range is highly dependent upon the setting, but in a forest deer can be identified to 100 feet.
Trigger Speed	¼ second	Fast trigger speeds allows the camera to capture moving animals before they move beyond the view of the camera.
Recovery Speed	1 to 2 seconds	The camera can be ready for the 2 <sup>nd</sup> shot 1 to 2 seconds after the first allowing the camera to capture a second animal following the first.
PIR Fresnel Lens	Wide & Centered	2 included: wide angle & center focus PIR Fresnel lens.
Battery System	AA battery, quantity 8	AA batteries allows the camera to be very small.
Battery Life	Up to 6 months Over 10,000 images	Battery life is dependent on battery quality, run days, number of images taken, temperature, and other factors.
Day Images	Full Color	5MP or 20MP color images with stunning clarity.
Night Images	Color	5MP or 20MP color images with virtually no motion blur.
Image Imprint	Date, Time, Moon Phase, CAM ID	Black bar footer provides clear identification.
Zone Control	Yes (Select wide/narrow)	Set the animal detector to wide view or narrow view as required by the situation.
Guard Duty	1, 2, 3, 4, 5 images per minute	Day only Guard Duty time lapse mode.
Time Lapse	1, 3, 6, 12,24 hours	Day and night time lapse mode.
Camera Delays	1 second to 3 minutes	Provide versatility for trails, scrapes, food plots and feeders.
Burst Mode	1 to 5 images	Select to trigger multiple images per event.
Camera ID	0001 thru 9999	Camera ID printed on image footer.
Day & Night Modes	All Day, Day Only, Night Only	Selects when motion sensed images will be taken.
Operating Mode	Super Simple Setup	Rotary switch makes setup as easy as using an alarm clock.
No Card Mode	Yes	Camera will continue to record images without an SD card.
Video	Day only – 10, 20, 30 seconds	Records an image with video.
Full Size Images	Yes (4:3)	Full sized images show more area than wide view images.
Genius Mount	Yes	Easier to deploy a camera when the mount is separated from the camera. Optional pan, tilt, lock sold separately.
Warranty Tracker	Yes	No receipt required to validate warranty.
5:2:1 Warranty	Yes	1 year standard warranty. 2 years with online registration. 5 year reduced cost replacement program.

Learn more at [www.cuddeback.com](http://www.cuddeback.com)

Non Typical, Inc. - PO Box 10447 - Green Bay, WI 54307

***Since 1989 – the World's Oldest Trail Camera Company***